

List of pages in this Trip Kit

Trip Kit Index

Airport Information For EGPO

Terminal Charts For EGPO

Revision Letter For Cycle 21-2020

Change Notices

Notebook

General Information

Location: STORNOWAY GBR
ICAO/IATA: EGPO / SYV
Lat/Long: N58° 12.9', W006° 19.9'
Elevation: 26 ft

Airport Use: Public
Daylight Savings: Observed
UTC Conversion: +0:00 = UTC
Magnetic Variation: 4.0° W

Fuel Types: 100 Octane (LL), Jet A-1
Customs: Yes
Airport Type: IFR
Landing Fee: Yes
Control Tower: Yes
Jet Start Unit: No
LLWS Alert: No
Beacon: No

Sunrise: 0705 Z
Sunset: 1717 Z

Runway Information

Runway: 06
Length x Width: 3281 ft x 75 ft
Surface Type: asphalt
TDZ-Elev: 26 ft
Lighting: Edge

Runway: 18
Length x Width: 7595 ft x 151 ft
Surface Type: asphalt
TDZ-Elev: 16 ft
Lighting: Edge, ALS
Displaced Threshold: 394 ft

Runway: 24
Length x Width: 3281 ft x 75 ft
Surface Type: asphalt
TDZ-Elev: 21 ft
Lighting: Edge

Runway: 36
Length x Width: 7595 ft x 151 ft
Surface Type: asphalt
TDZ-Elev: 15 ft
Lighting: Edge, ALS

Displaced Threshold: 394 ft

Communication Information

ATIS: 115.100

Stornoway Tower: 119.480 VHF-DF

Stornoway Approach: 119.480 VHF-DF

Stornoway Fire Chief Emergency: 121.600

Stornoway Information: 119.480 AFIS VHF-DF

EGPO/SYY
STORNOWAY

JEPPESSEN

STORNOWAY, UK

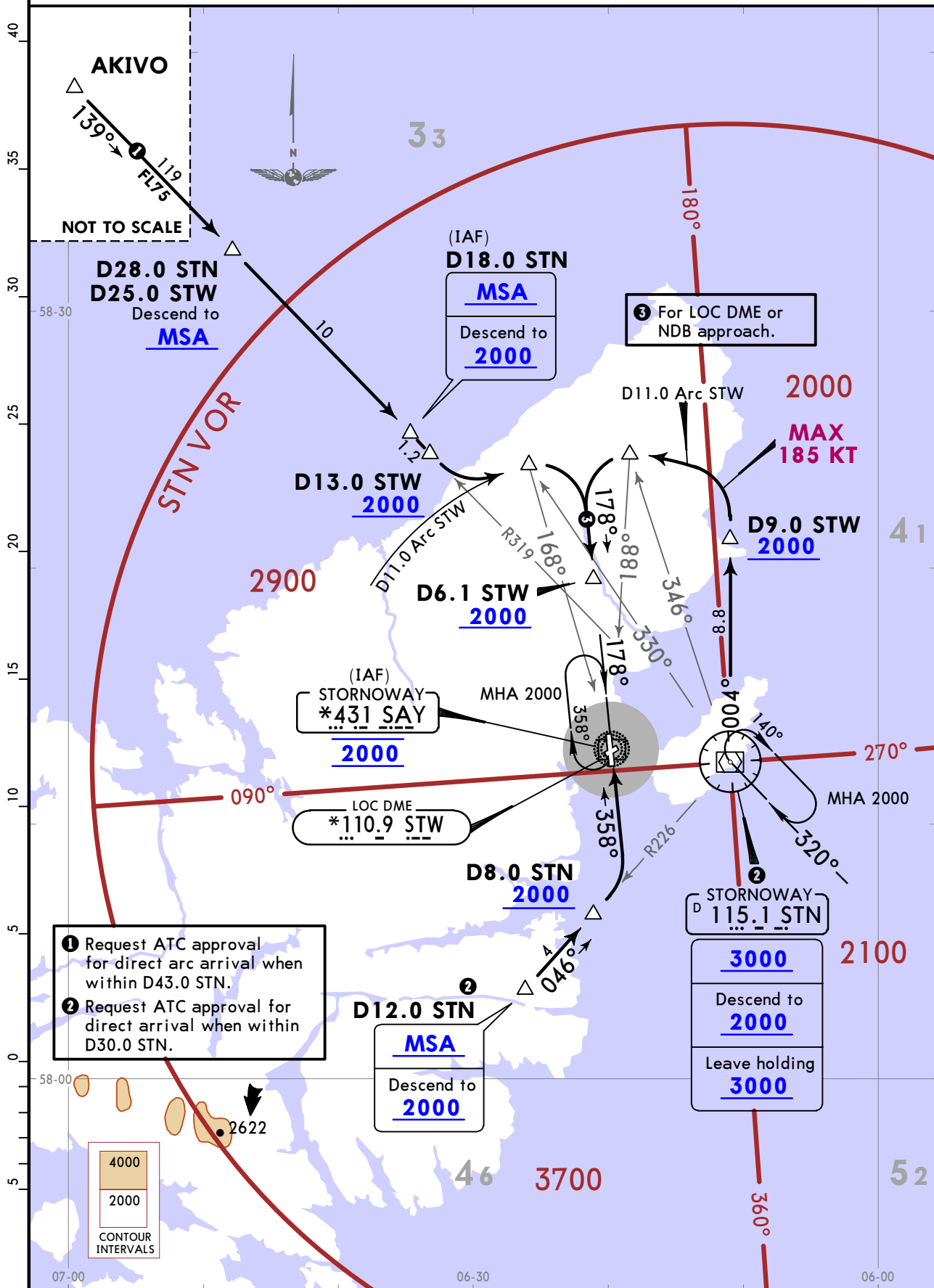
17 APR 20 10-2

ARRIVAL

*ATIS 115.1	Apt Elev 26	Alt Set: hPa Trans level: By ATC Direct arrivals are subject to ATC approval.
-----------------------	-----------------------	--

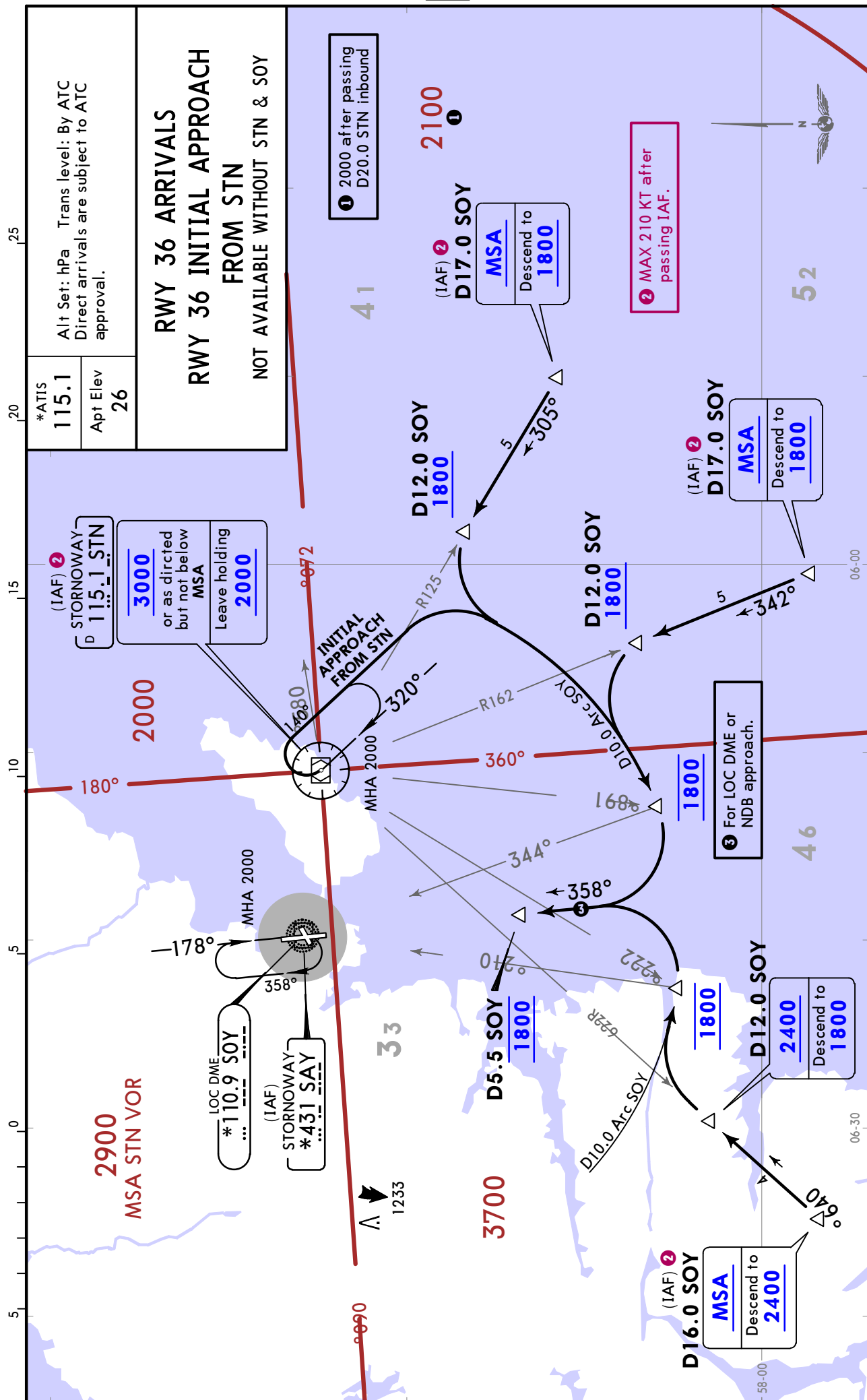
RWY 18 ARRIVALS

ARRIVALS FROM NORTHWEST & FROM STN NOT AVAILABLE
WITHOUT STN & STW
ARRIVAL FROM SOUTHWEST NOT AVAILABLE
WITHOUT STN



EGPO/SYY STORNOWAY

STORNOWAY, UK ARRIVAL



EGPO/SYY

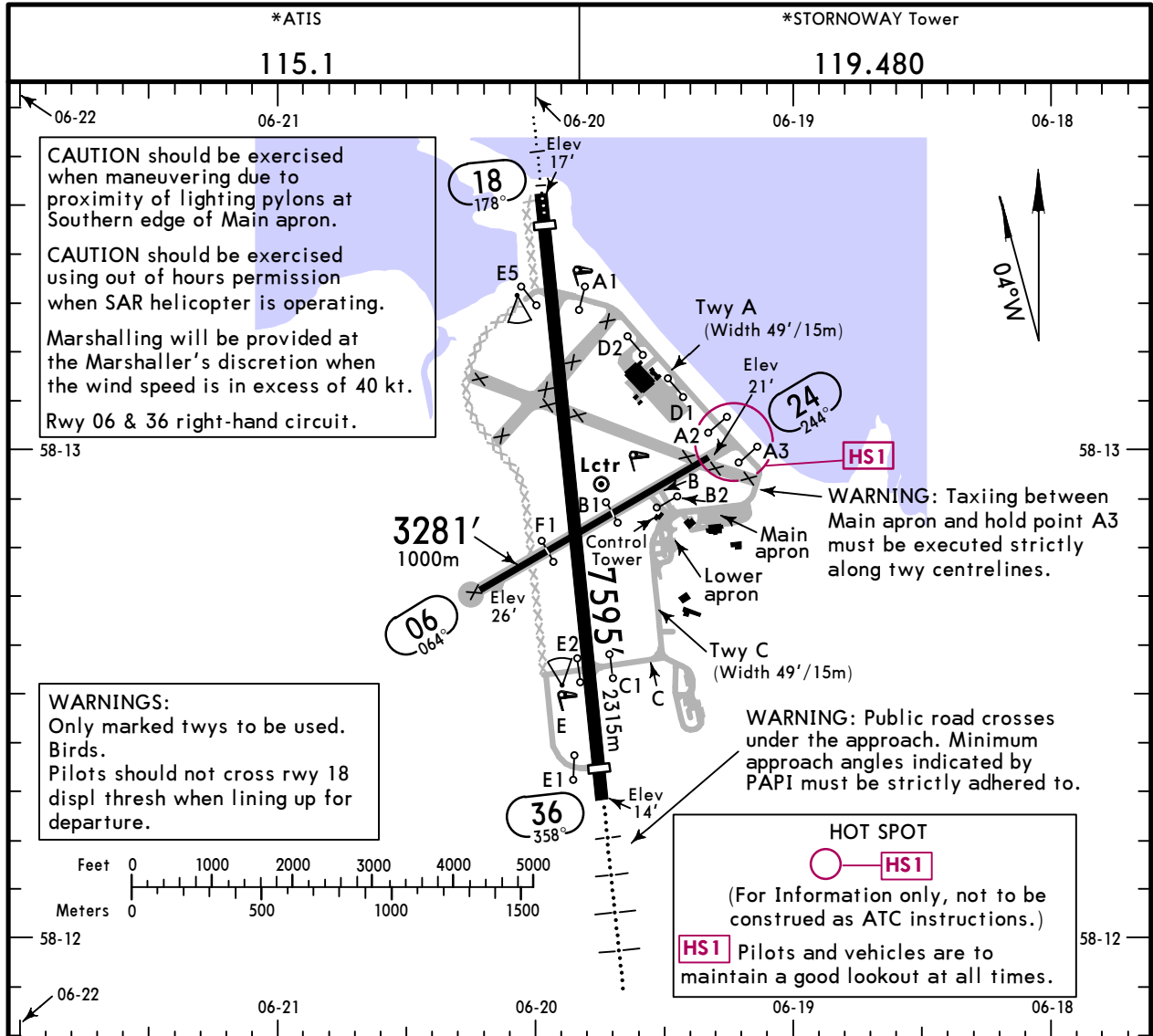
Apt Elev 26'
N58 12.9 W006 19.9

JEPPesen

19 OCT 18 (10-9)

STORNOWAY, UK

STORNOWAY



CAUTION should be exercised when maneuvering due to proximity of lighting pylons at Southern edge of Main apron.

CAUTION should be exercised using out of hours permission when SAR helicopter is operating.

Marshalling will be provided at the Marshallers's discretion when the wind speed is in excess of 40 kt.

Rwy 06 & 36 right-hand circuit.

WARNINGS:
Only marked twys to be used.
Birds.
Pilots should not cross rwy 18 displ thresh when lining up for departure.

WARNING: Taxiing between Main apron and hold point A3 must be executed strictly along twy centrelines.

WARNING: Public road crosses under the approach. Minimum approach angles indicated by PAPI must be strictly adhered to.

HOT SPOT
(For Information only, not to be construed as ATC instructions.)
Pilots and vehicles are to maintain a good lookout at all times.

RWY	ADDITIONAL RUNWAY INFORMATION				USABLE LENGTHS			WIDTH
	Remarks	APAPI-L	RVR	Threshold	Glide Slope	TAKE-OFF		
06 24	RL(portable, on request)	APAPI-L ②	RVR				75' 23m	
18 36	HIRL (54m) HIALS	PAPI-L(angle 3.0°)	RVR	6824' 2080m		⑤	151' 46m	

- ① Rwy 06/24 not available for night landings.
 - ② (angle 4.0°)
 - ③ (angle 3.5°, MEHT 20')
 - ④ The 394'/120m of asphalt South of Rwy 36 thresh is unfit for use by acct.
 - ⑤ TAKE-OFF RUN AVAILABLE
- | | | | |
|----------------------|---------------|----------------------|---------------|
| RWY 18: | | RWY 36: | |
| From rwy head | 6824' (2080m) | From rwy head | 6824' (2080m) |
| abm holding point A1 | 5689' (1734m) | abm holding point C1 | 5440' (1658m) |
| rwy 06/24 int | 2848' (868m) | rwy 06/24 int | 3681' (1122m) |

	Standard TAKE-OFF		
	Low Visibility Take-off	Adequate vis ref (Day only)	
A	Day: RL & RCLM Night: RL	Day: RL or RCLM Night: RL	Adequate vis ref (Day only)
B	RVR 300m ① ②	400m ②	500m ②
C			
D			

① T/O rwy 18/36 below 400m available only for authorized Air Operator Certificate holders.
② T/O rwy 06/24 below 800m available only for authorized Air Operator Certificate holders.

EGPO/SYY STORNOWAY

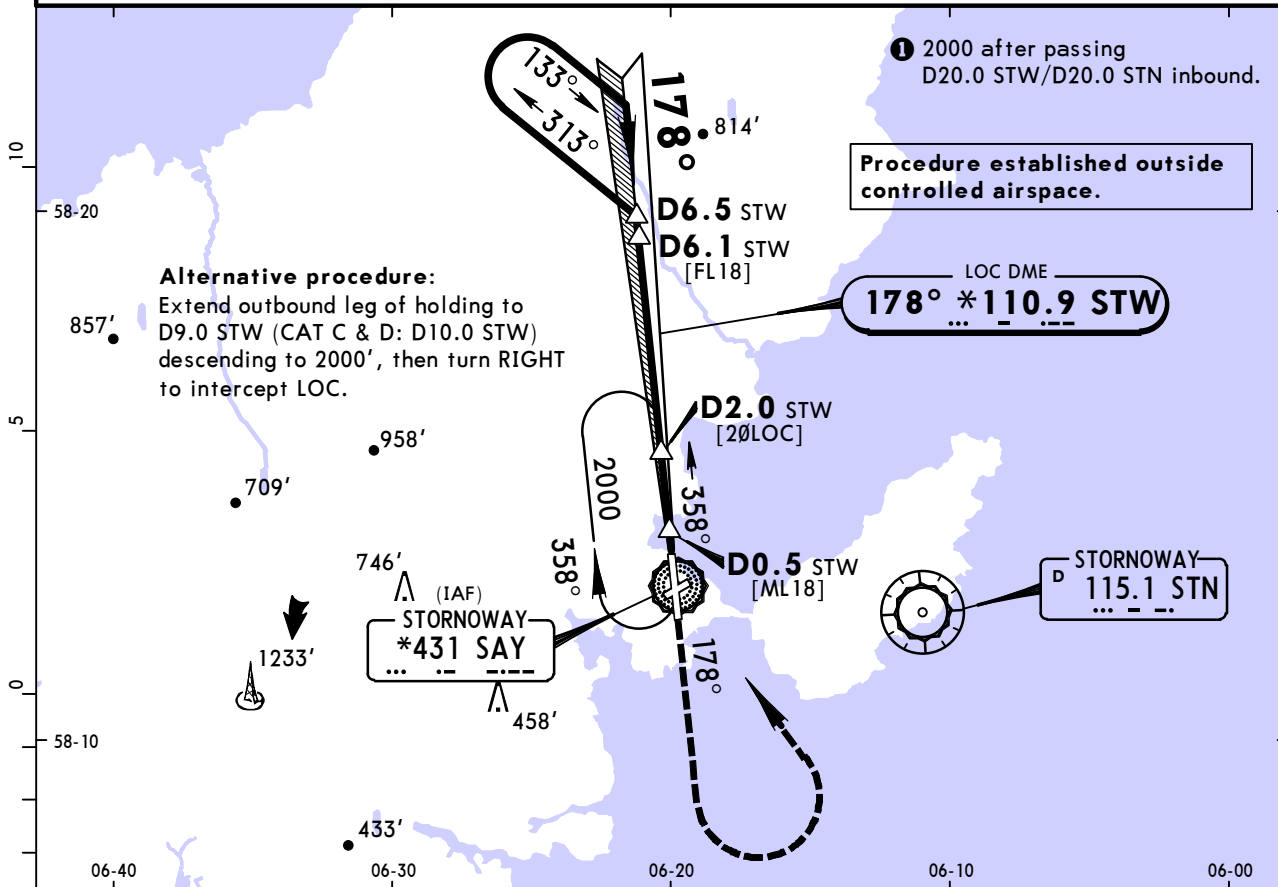
JEPPESEN
19 OCT 18 (11-1)

STORNOWAY, UK NDB LOC DME Rwy 18

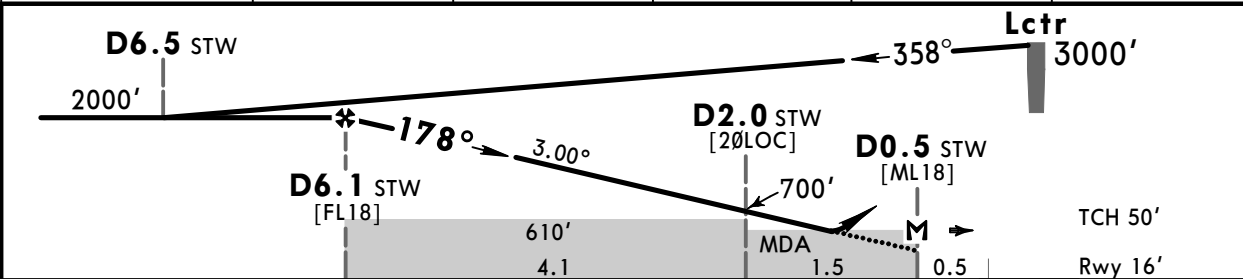
*ATIS 115.1		*STORNOWAY Approach 119.480		*STORNOWAY Tower 119.480		
LOC STW *110.9	Final Apch Crs 178°	Procedure Alt D6.1 STW 2000' (1984')	DA/MDA(H) 390' (374')	Apt Elev 26' Rwy 16'		
MISSED APCH: Climb STRAIGHT AHEAD to 2000', then turn LEFT to Lctr at 2000' to hold, or as directed.						

Alt Set: hPa Rwy Elev: 1 hPa Trans level: By ATC Trans alt: 3000'

1. LOC DME reads zero at rwy 18 thresh. 2. Lowest altitude to commence procedure from holding is 2000'.



STW DME	5.0	4.0	3.0	2.0	1.0
ALTITUDE	1650'	1330'	1020'	700'	380'



Gnd speed-Kts	70	90	100	120	140	160	HIALS PAPI ↑ 2000'
Descent angle	3.00°	372	478	531	637	743	
MAP at D0.5 STW							

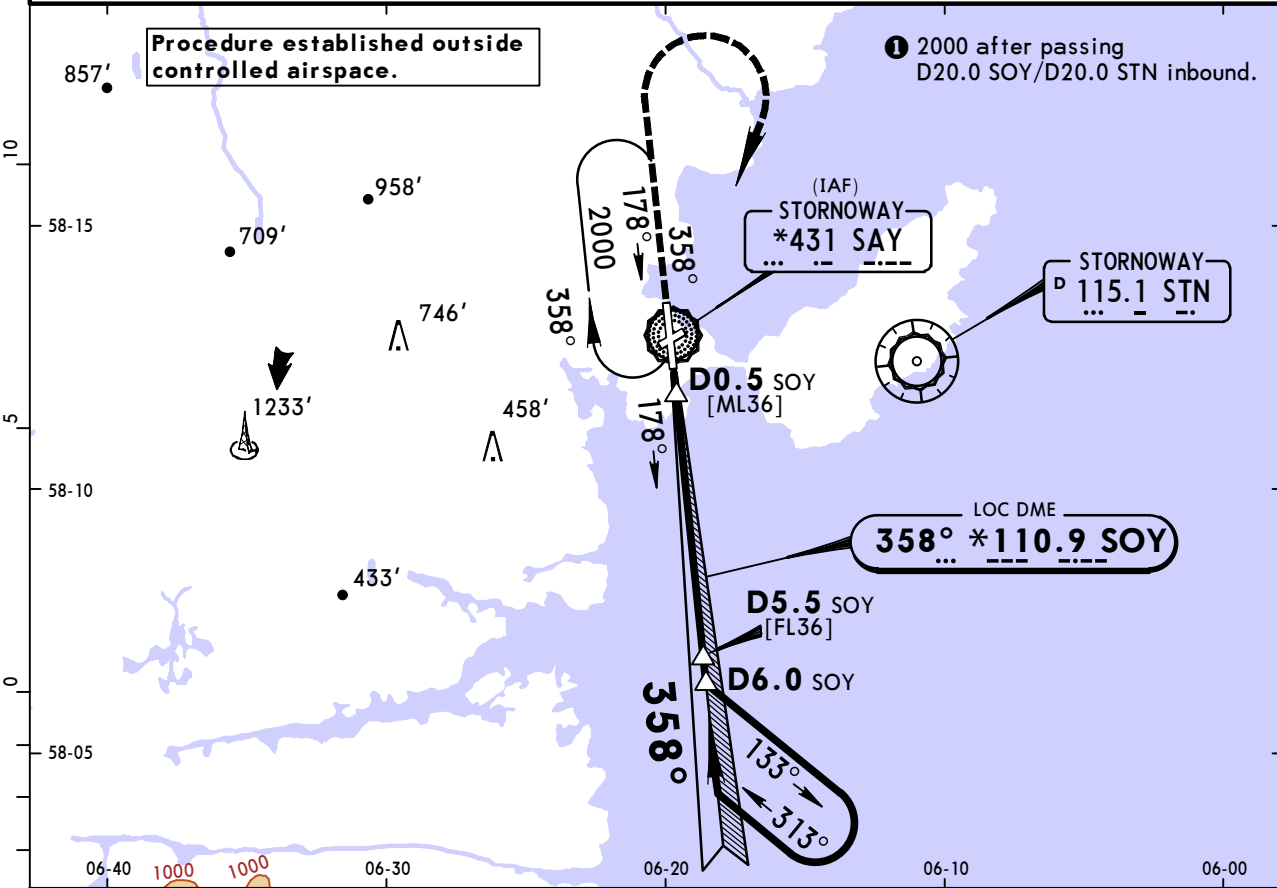
PANS OPS	Standard STRAIGHT-IN LANDING RWY 18			CIRCLE-TO-LAND						
	CDFA			East of Rwy 18/36						
	DA/MDA(H) 390' (374')			Max Kts		MDA(H)		VIS		
	ALS out			100	500'	(474')	1500m	500'	(474')	1500m
	A	RVR 1500m		135	530'	(504')	1600m	630'	(604')	1600m
B	RVR 1300m		180	690'	(664')	2400m	860'	(834')	2400m	
C			RVR 1700m		205	770'	(744')	3600m	1060'	(1034')
D										

EGPO/SYY STORNOWAY

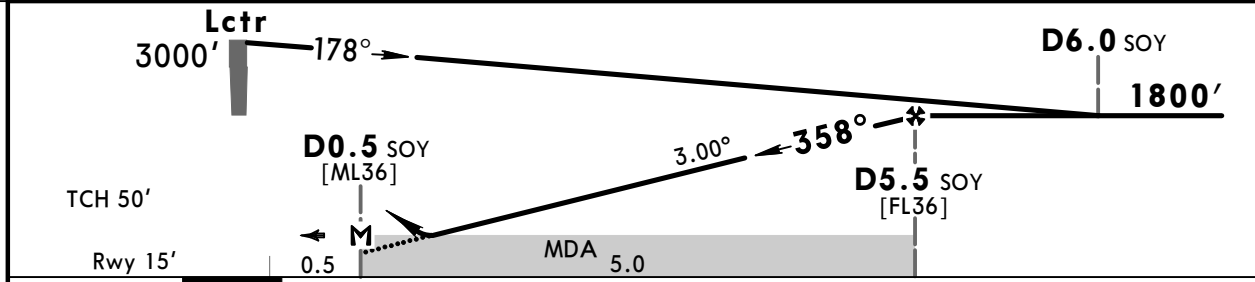
JEPPESSEN
19 OCT 18 (11-2)

STORNOWAY, UK NDB LOC DME Rwy 36

*ATIS 115.1		*STORNOWAY Approach 119.480		*STORNOWAY Tower 119.480		
LOC SOY *110.9	Final Apch Crs 358°	Minimum Alt D5.5 SOY 1800' (1785')	DA/MDA(H) 330' (315')	Apt Elev 26' Rwy 15'		
MISSED APCH: Climb STRAIGHT AHEAD to 2000', then turn RIGHT to Lctr at 2000' to hold, or as directed.						
Alt Set: hPa		Rwy Elev: 1 hPa		Trans level: By ATC		Trans alt: 3000'
1. LOC DME reads zero at rwy 36 threshold. 2. Lowest altitude to commence procedure from holding is 2000'.						



SOY DME	1.0	2.0	3.0	4.0	5.0
ALTITUDE	380'	700'	1010'	1330'	1640'



Gnd speed-Kts	70	90	100	120	140	160	HIALS PAPI 2000' ↑
Descent angle	3.00°	372	478	531	637	849	
MAP at D0.5 SOY							

PANS OPS	Standard STRAIGHT-IN LANDING RWY 36		CIRCLE-TO-LAND			
	CDFA		East of Rwy 18/36			
	DA/MDA(H) 330' (315')		Max Kts			
	ALS out		MDA(H)	VIS	MDA(H)	VIS
	A		100	500' (474') 1500m	500' (474') 1500m	
B		135	530' (504') 1600m	630' (604') 1600m		
C	RVR 750m	RVR 1400m	180	690' (664') 2400m	860' (834') 2400m	
D			205	770' (744') 3600m	1060' (1034') 3600m	

EGPO/SYY STORNOWAY

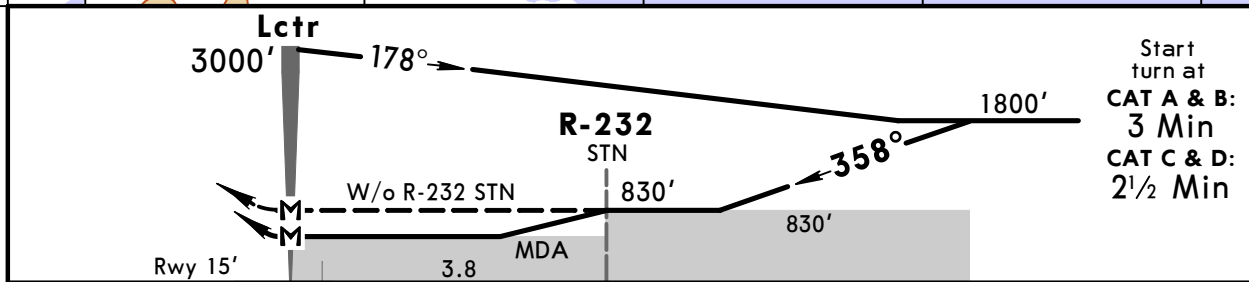
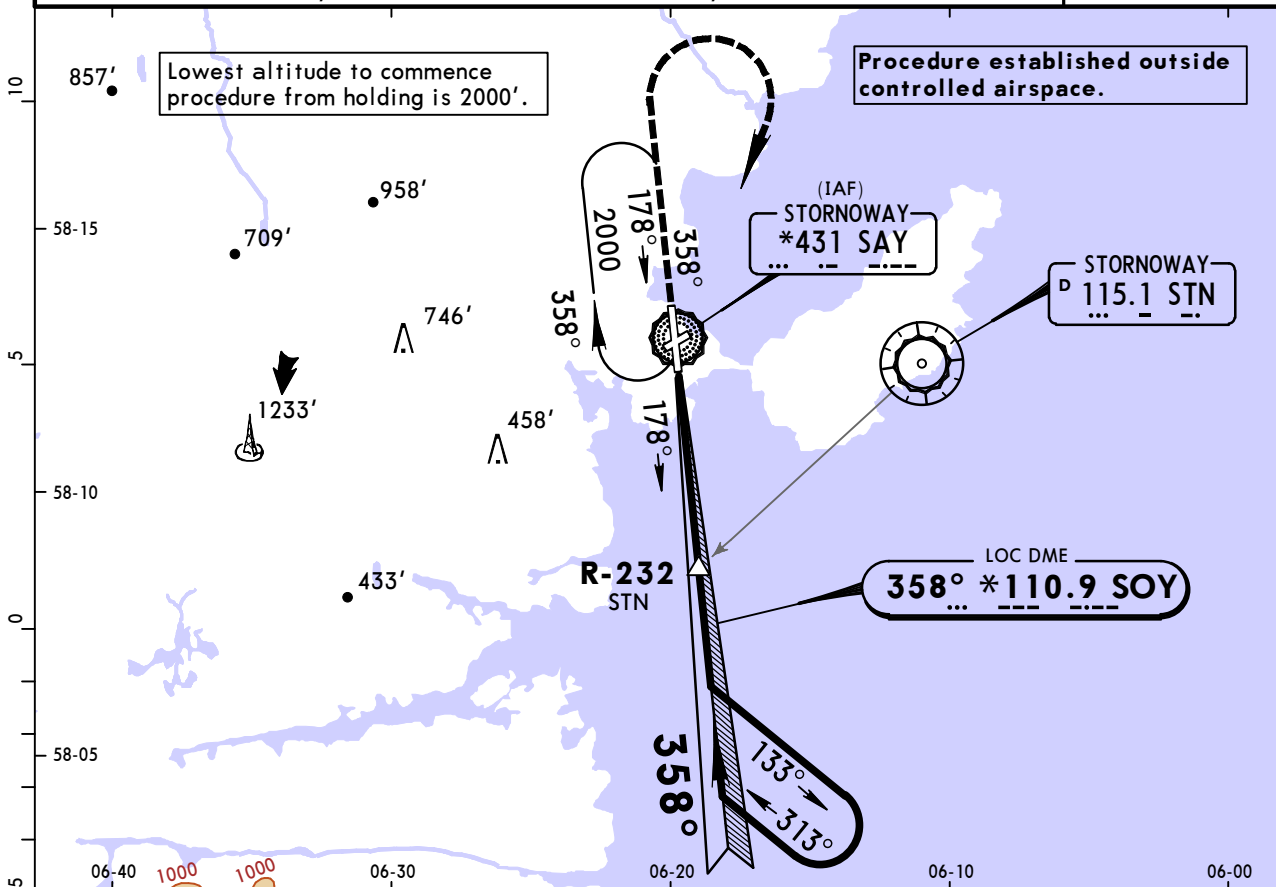
JEPPESEN
19 OCT 18 **(11-3)**

STORNOWAY, UK NDB LOC Rwy 36

*ATIS 115.1		*STORNOWAY Approach 119.480		*STORNOWAY Tower 119.480		<p>MSA SAY Lctr</p> <p>① 2000 after passing D20.0 STN inbound.</p>
LOC SOY *110.9	Final Apch Crs 358°	With R-232 STN Procedure Alt R-232 STN 830' (815')	With R-232 STN MDA(H) 330' (315')	Apt Elev 26'		
		W/o R-232 STN Minimum Alt No FAF	W/o R-232 STN MDA(H) 830' (815')	Rwy 15'		

MISSED APCH: Climb STRAIGHT AHEAD to 2000', then turn RIGHT to Lctr at 2000' to hold, or as directed.

Alt Set: hPa Rwy Elev: 1 hPa Trans level: By ATC Trans alt: 3000'



MAP at Lctr					2000'
-------------	--	--	--	--	--------------

	STRAIGHT-IN LANDING RWY 36				CIRCLE-TO-LAND			
	With R-232 STN non-CDFA		W/o R-232 STN non-CDFA		East of Rwy 18/36			
	MDA(H)	ALS out	MDA(H)	ALS out	MDA(H)	VIS	MDA(H)	VIS
A					500'(474')	1500m	500'(474')	1500m
B	RVR 1000m	RVR 1600m	RVR 3300m	RVR 4000m	530'(504')	1600m	630'(604')	1600m
C	RVR 1200m	RVR 1800m	RVR 3500m	RVR 4200m	690'(664')	2400m	860'(834')	2400m
D					770'(744')	3600m	1060'(1034')	3600m

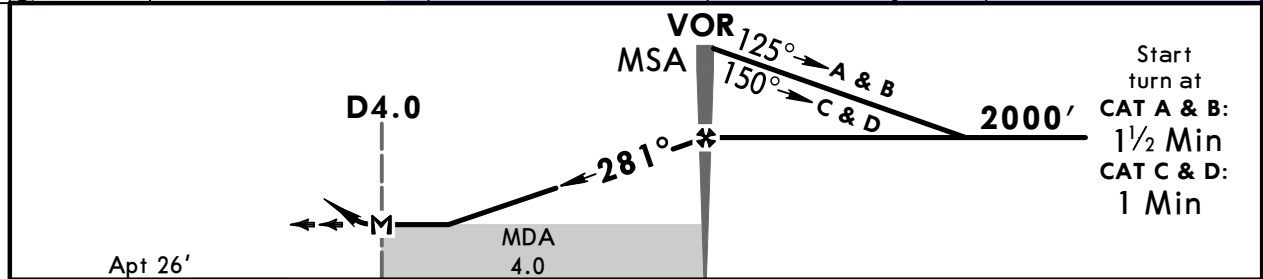
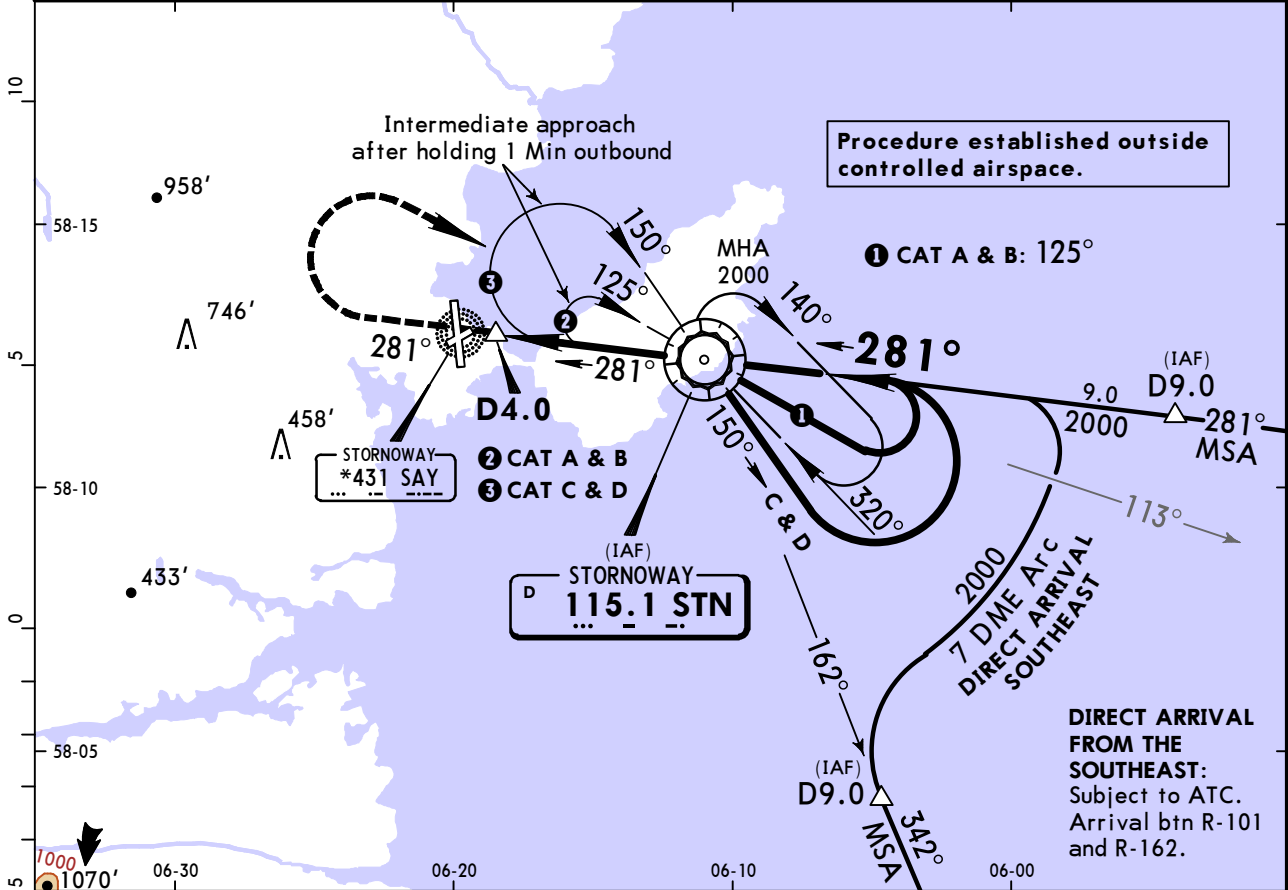
① or higher straight-in minimums.

EGPO/SYY STORNOWAY

JEPPESSEN
19 OCT 18 **(13-1)**

STORNOWAY, UK VOR DME

*ATIS 115.1		*STORNOWAY Approach 119.480		*STORNOWAY Tower 119.480		
VOR STN 115.1	Final Apch Crs 281°	Minimum Alt VOR 2000' (1974')	MDA(H) Refer to Minimums	Apt Elev 26'		
MISSED APCH: Climb STRAIGHT AHEAD to 1000', then climbing turn RIGHT to VOR at 2000', or as directed.						
Alt Set: hPa		Apt Elev: 1 hPa		Trans level: By ATC		
1. WARNING: Due to high ground West of the airfield do remain within appropriate circling areas according to acft category.		2. Baseturn restricted to MAX 210 KT.		3. Lowest altitude to commence procedure from holding is 2000'.		



Gnd speed-Kts	70	90	100	120	140	160	Lighting - Refer to Airport Chart	1000'	2000'	STN 115.1
W/o DME: VOR to MAP	4.0	3:26	2:40	2:24	2:00	1:43				
With DME: MAP at D4.0										

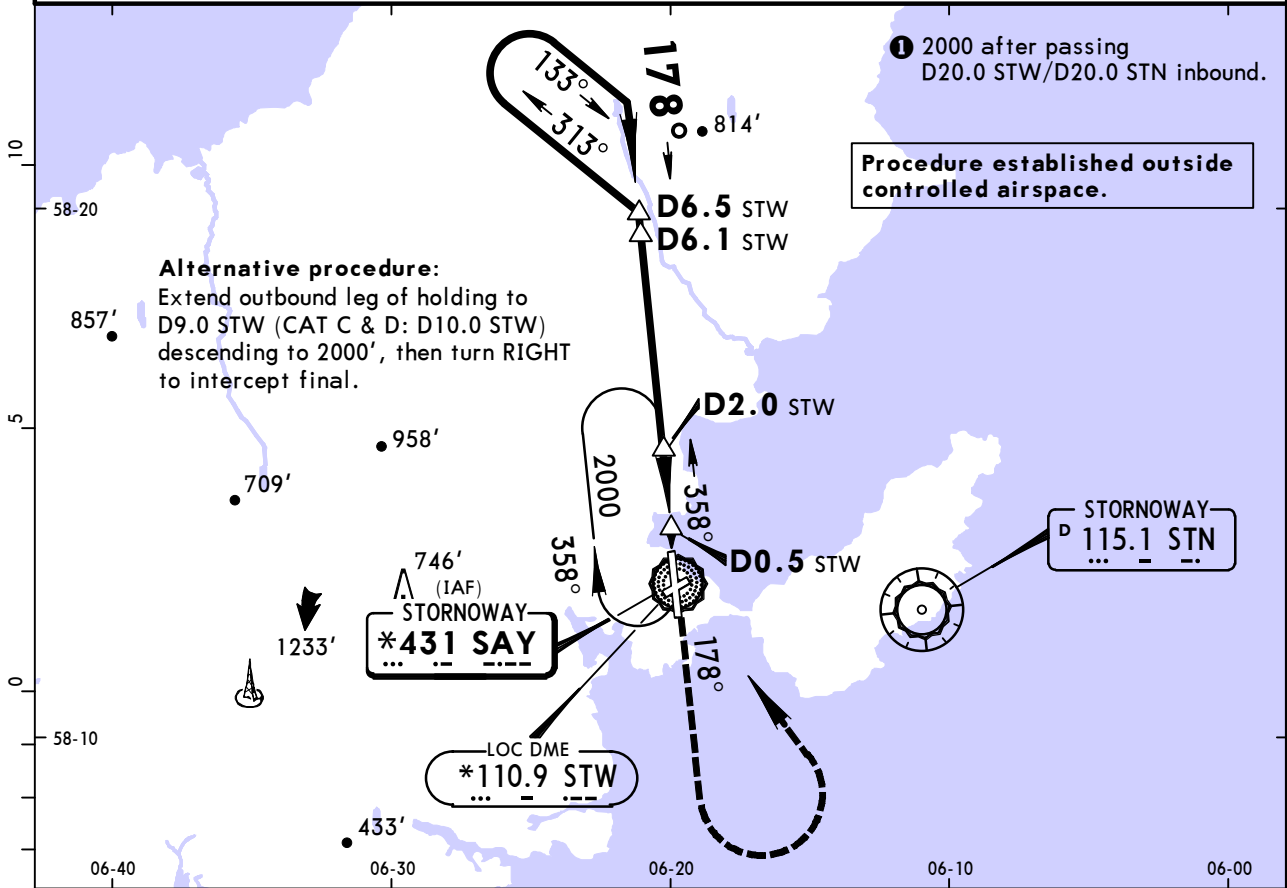
Standard		CIRCLE-TO-LAND			
East of Rwy 18/36					
	Max Kts	MDA(H)	VIS	MDA(H)	VIS
A	100	500' (474')	1500m	500' (474')	1500m
B	135	530' (504')	1600m	630' (604')	1600m
C	180	690' (664')	2400m	860' (834')	2400m
D	205	770' (744')	3600m	1060' (1034')	3600m

EGPO/SYY STORNOWAY

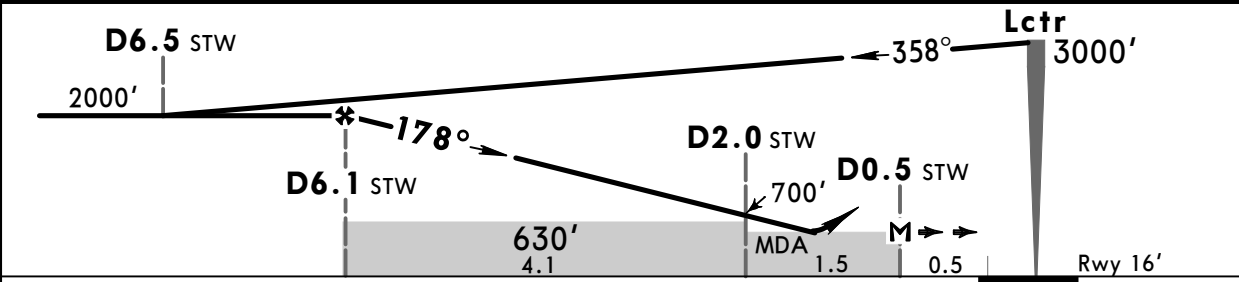
JEPPESSEN
19 OCT 18 (16-1)

STORNOWAY, UK NDB DME Rwy 18

*ATIS 115.1		*STORNOWAY Approach 119.480		*STORNOWAY Tower 119.480		
Lctr SAY *431	Final Apch Crs 178°	Procedure Alt D6.1 STW 2000' (1984')	DA/MDA(H) 420' (404')	Apt Elev 26'	Rwy 16'	
MISSED APCH: Climb STRAIGHT AHEAD to 2000', then turn LEFT to Lctr at 2000' to hold, or as directed.						
Alt Set: hPa		Rwy Elev: 1 hPa		Trans level: By ATC		Trans alt: 3000'
1. LOC DME reads zero at rwy 18 thresh. 2. Lowest altitude to commence procedure from holding is 2000'.						



STW DME	5.0	4.0	3.0	2.0
ALTITUDE	1650'	1330'	1020'	700'



Gnd speed-Kts	70	90	100	120	140	160	HIALS PAPI 2000'
Descent angle	3.00°	372	478	531	637	849	
MAP at D0.5 STW							

Standard STRAIGHT-IN LANDING RWY 18				CIRCLE-TO-LAND				
CDFA DA/MDA(H) 420' (404')				East of Rwy 18/36				
ALS out				Max Kts	MDA(H)	VIS	MDA(H)	VIS
A	RVR 1500m			100	500' (474')	1500m	500' (474')	1500m
B				135	530' (504')	1600m	630' (604')	1600m
C	RVR 1900m			180	690' (664')	2400m	860' (834')	2400m
D				205	770' (744')	3600m	1060' (1034')	3600m

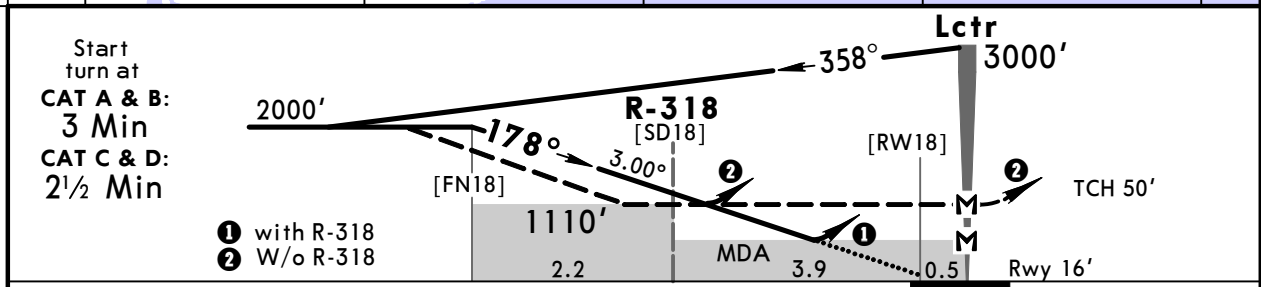
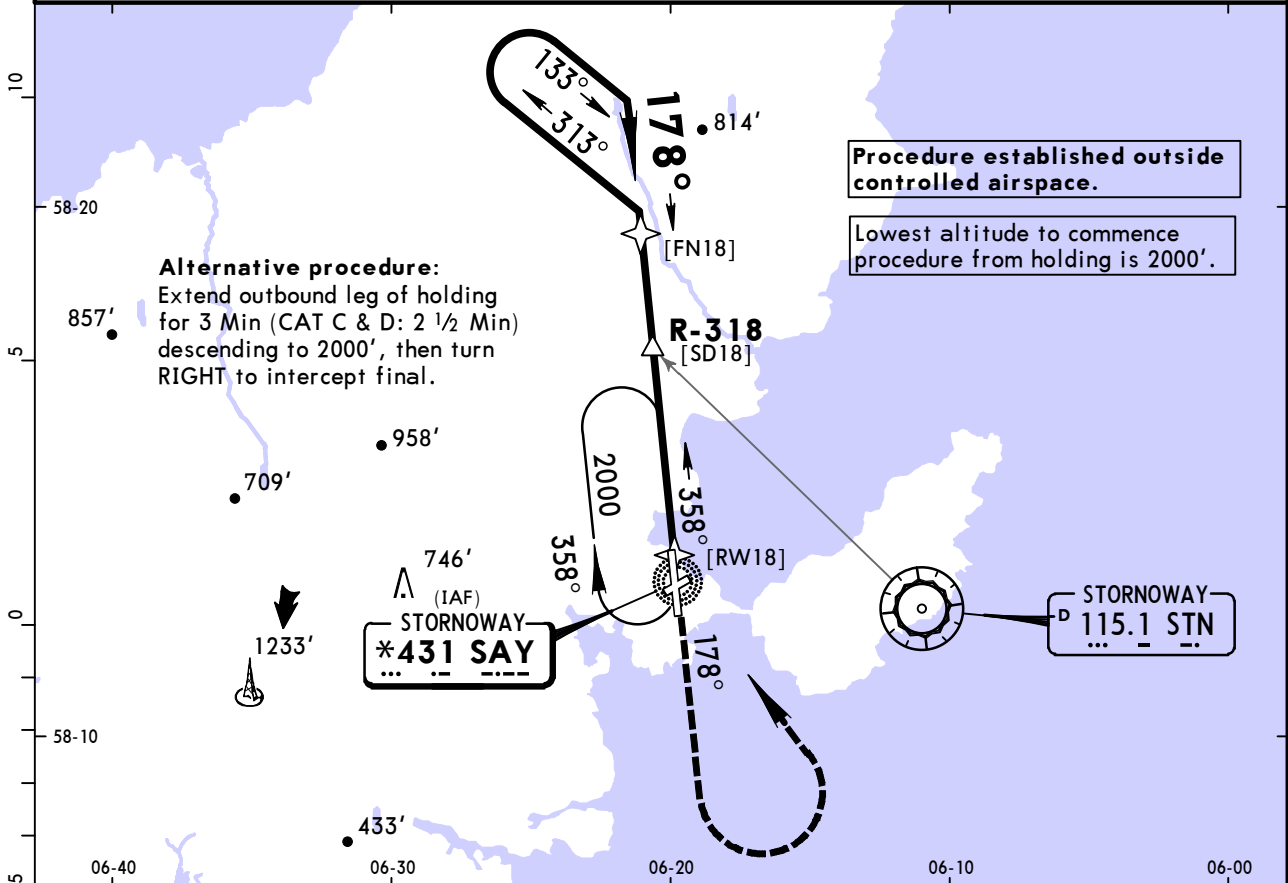
PANS OPS

EGPO/SYY STORNOWAY

JEPPESEN
19 OCT 18 (16-2)

STORNOWAY, UK
NDB Rwy 18

*ATIS 115.1		*STORNOWAY Approach 119.480		*STORNOWAY Tower 119.480	
Lctr SAY *431	Final Apch Crs 178°	With R-318 Procedure Alt R-318 1110' (1094')	With R-318 DA/MDA(H) 610' (594')	Apt Elev 26'	Rwy 16'
		W/o R-318 Minimum Alt No FAF	W/o R-318 DA/MDA(H) 1110' (1094')		
MISSED APCH: Climb STRAIGHT AHEAD to 2000', then turn LEFT to Lctr at 2000' to hold, or as directed.					
Alt Set: hPa		Rwy Elev: 1 hPa		Trans level: By ATC	
Trans alt: 3000'					



Gnd speed-Kts	70	90	100	120	140	160	
Descent angle 3.00°	372	478	531	637	743	849	
MAP at Lctr							

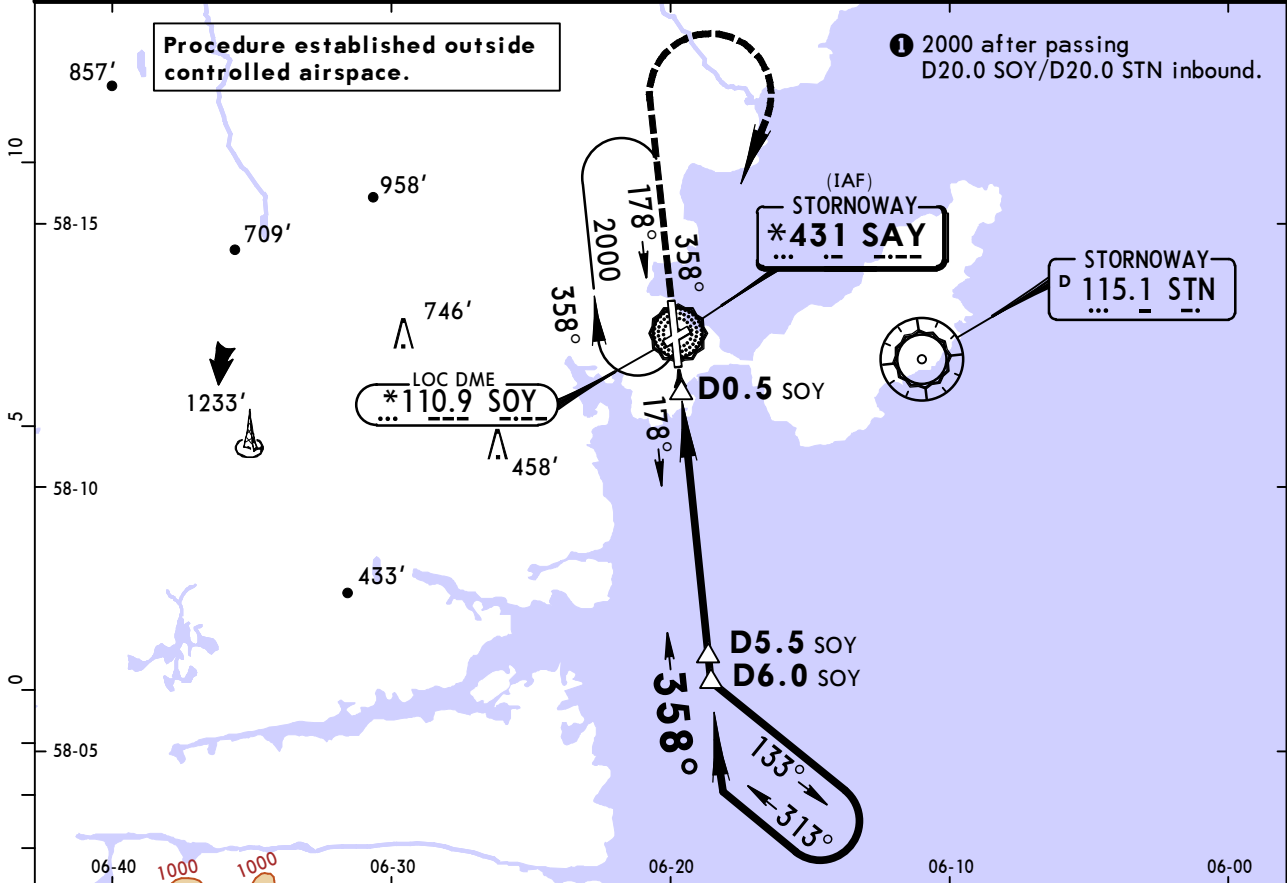
Standard						CIRCLE-TO-LAND	
STRAIGHT-IN LANDING RWY 18							
CDFA With R-318		non-CDFA		CDFA W/o R-318		non-CDFA	
DA/MDA(H)		MDA(H)		DA/MDA(H)			MDA(H)
610' (594')		610' (594')		1110' (1094')		1110' (1094')	
ALS out		ALS out		ALS out		ALS out	
A	RVR 1500m		RVR 2500m		RVR 2900m		FOR CIRCLING MINIMUMS SEE 16-5
B	RVR 1500m		RVR 2500m		RVR 4600m		
C	RVR 2300m		RVR 2700m		RVR 5000m		
D	RVR 2400m		RVR 3100m		RVR 4800m		

EGPO/SYY STORNOWAY

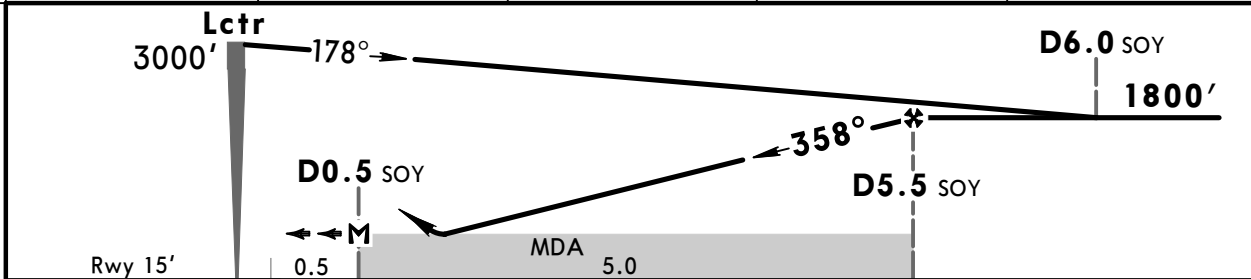
JEPPESSEN
19 OCT 18 (16-3)

STORNOWAY, UK NDB DME Rwy 36

*ATIS 115.1		*STORNOWAY Approach 119.480		*STORNOWAY Tower 119.480		
Lctr SAY *431	Final Apch Crs 358°	Minimum Alt D5.5 SOY 1800' (1785')	DA/MDA(H) 400' (385')	Apt Elev 26' Rwy 15'		
MISSED APCH: Climb STRAIGHT AHEAD to 2000', then turn RIGHT to Lctr at 2000' to hold, or as directed.						
Alt Set: hPa		Rwy Elev: 1 hPa		Trans level: By ATC		Trans alt: 3000'
1. LOC DME reads zero at rwy 36 threshold. 2. Lowest altitude to commence procedure from holding is 2000'.						



SOY DME	2.0	3.0	4.0	5.0
ALTITUDE	700'	1010'	1330'	1640'



Gnd speed-Kts	70	90	100	120	140	160	HIALS PAPI 2000' ↑
Descent angle	3.00°	372	478	531	637	849	
MAP at D0.5 SOY							

PANS OPS	Standard STRAIGHT-IN LANDING RWY 36				CIRCLE-TO-LAND				
	CDFA DA/MDA(H) 400' (385')				East of Rwy 18/36				
			ALS out		Max Kts	MDA(H) VIS		MDA(H) VIS	
	RVR 1100m		RVR 1500m			100	500' (474')	1500m	500' (474')
					135	530' (504')	1600m	630' (604')	1600m
RVR 1800m				180	690' (664')	2400m	860' (834')	2400m	
				205	770' (744')	3600m	1060' (1034')	3600m	

NDB RWY 18 MINIMUMS

Standard		CIRCLE-TO-LAND					
		East of Rwy 18/36					
	Max Kts	MDA(H)		VIS	MDA(H)		VIS
A	110	500' (474')	I	1500m	500' (474')	I	1500m
B	135	530' (504')	I	1600m	630' (604')	I	1600m
C	180	690' (664')	I	2400m	860' (834')	I	2400m
D	205	770' (744')	I	3600m	1060' (1034')	I	3600m

I or higher straight-in minimums.

NDB RWY 36 MINIMUMS

Standard		CIRCLE-TO-LAND					
		East of Rwy 18/36					
	Max Kts	MDA(H)		VIS	MDA(H)		VIS
A	110	500' (474')	I	1500m	500' (474')	I	1500m
B	135	530' (504')	I	1600m	630' (604')	I	1600m
C	180	690' (664')	I	2400m	860' (834')	I	2400m
D	205	770' (744')	I	3600m	1060' (1034')	I	3600m

I or higher straight-in minimums.

Chart changes since cycle 20-2020

ADD = added chart, REV = revised chart, DEL = deleted chart.

ACT	PROCEDURE IDENT	INDEX	REV DATE	EFF DATE
-----	-----------------	-------	----------	----------

STORNOWAY, (STORNOWAY - EGPO)

TERMINAL CHART CHANGE NOTICES

No Chart Change Notices for Airport EGPO

Chart Change Notices for Country GBR

Type: Gen Tmnl

Effectivity: Permanent

Begin Date: Immediately

End Date: No end date

The following Take-off minima according to Commission Regulation No. 965/2012 (EASA Air Operations Regulation) are applicable for Low Visibility Take-off Operations within the UK FIR for CAT ABCD aircraft: 1. With RL and RCLM during day or with RL or CL during night: RVR 300m 2. With RL and CL: RVR 200m 3. With RL and CL and TDZ, MID and RO RVR: RVR 150m 4. With HIRL and CL and TDZ, MID and RO RVR: RVR 125m 5. On CAT III RWYs with approved guidance system or HUD/HUDLS: RVR 75m